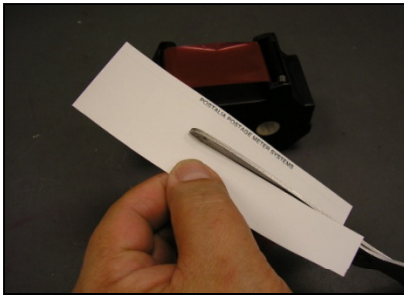


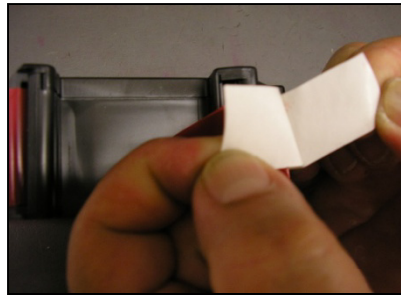
T-1000/optimail™ Ribbon Repair Instructions

As you may know, the cassette housings of the T-1000 and optimail™ are now manufactured in such a way that opening the housing is not possible. This becomes an issue when a customer needs to repair a torn ribbon. Below are steps for an easy fix to overcome that problem.

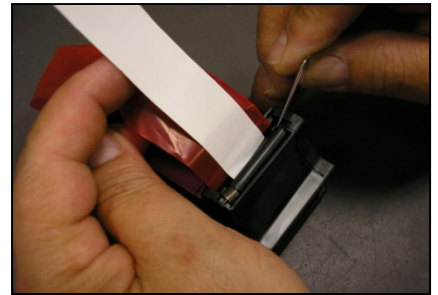
Step 1: Cut a label in half lengthwise.



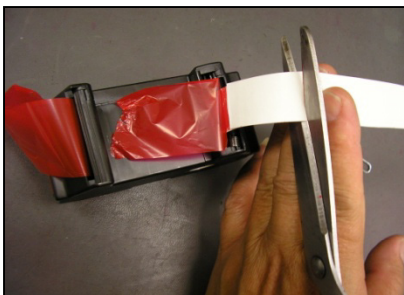
Step 2: Remove about 1/2" of backing paper on one end, exposing the adhesive surface.



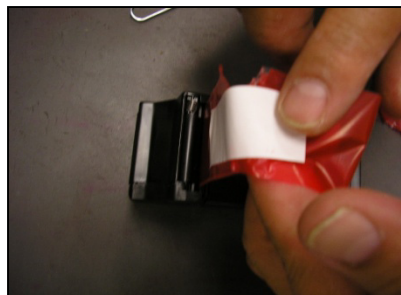
Step 3: Use a paper clip to press open the ribbon brake and insert the label until it sticks to the ribbon.



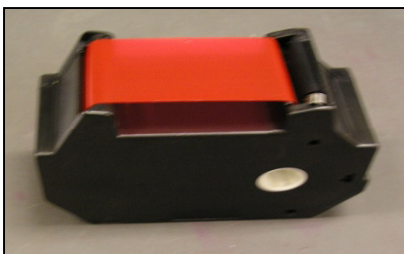
Step 4: that about 2" is remaining outside the cartridge.



Step 5: Peel off the rest of the backing and attach tape to exposed (other side) ribbon.



Step 6: Tighten the ribbon using the winding roller until the repaired section of ribbon is fully inside the cartridge.



Step 7:

